

- As shown in Figure E, install four 1.5V batteries correctly in the positive and negative directions.
- As shown in Figure F, install the bottle first and insert it into the fixing plate of pump head, then pour the corresponding soap liquid.
- As shown in Figure G, the product can use the alternating current directly.
- If you purchased a desktop, please refer to Figure H.
- As shown in Figure I, the product has three different modes, and it needs to replace the corresponding pump head if place different liquids. (such as, if the soap liquid is replaced with foam, the soap liquid pump head must be replaced with a foam pump head.)
- As shown in Figure J, the product supports disposable soap liquid bag.

◆ Note

- If the soap liquid left 1cm only, please add soap liquid.
- The effective range of the sensor is about 10cm.
- When the sense makes a dripping sound but there is no obstacle within 14cm, please replace the battery.
- Prevent any objects from blocking the liquid outlet, and keep the soap liquid clean without other strip or block shape of impurities.
- Please use the product frequently, if not used for a long time, the liquid may solidify.
- Cleaning products.
 - Pour out the soap liquid if no use the product, and wipe it with a clean cloth and take out the battery inside.
 - Do not put the product into water for cleaning, as it will damage the circuit board.
 - Use a damp cloth or dry towel to clean the surface of the product, and use dry towel to clean the battery box only.
 - Do not use the strong corrosive chemical solvents to clean the product, avoid damage and deform the surface.
- If the product has issue with dripping, please replace the pump head.
- If you purchase a foam machine, it is recommended to use foam water directly, Do Not use thicker hand sanitizer directly. If you use hand sanitizer, please mix with 30% soap liquid and 70% water, mix and shake evenly until it is diluted into water, so that you can press out more foam.

◆ Suggestion

Due to the different concentration of soap liquid in different regions, this product cannot be used the soap liquid in some regions (the soap liquid cannot be pressed out). If have the above situation, it is strongly recommended to put the clean water into the machine first until it can be pumped out normally. And then you can pour off the remaining water, and fill in the required soap liquid. Note: this product is 100% filled with clean water to make test during the process of production. It is normal if water drops are found in the product.

④

Welcome to select and purchase the automatic induction foam machine, soap dispenser and spray disinfection machine from HongKong Chuang Dian Company. The product is redefined with the maximum capacity of its own size, world-class reliability and environmental requirements. The product adopts international top-class electronic control induction technology and energy-saving cam rotation device. It has the characteristics of safe operation, stable and sensitive induction and so on. Automatic induction can avoid hands contacting directly and preventing cross infection. The drive circuit design with low energy consumption makes the battery's service life longer. It is the optimal choice for star hotels, airports, hospitals, docks, schools, luxury leisure clubs, bath centers, beauty parlors and so on.

◆ Product Features

- International Standard**
The materials and the entire industrial manufacturing process fully comply with the international standards. The product does not have any poison, pollution and radioactive ingredients and is a truly green, energy-saving and environmentally friendly product.
- International Patent Pump Head**
The press pump head with international patent is manufactured through a special process, which can ensure that the number of use more than 300,000 times, and the mold does not leak water.
- Key Lock Design and Safety Management**
Key lock design makes the bottle body and the back plate tightly locked. It is more reliable to use it in public places. The bottle cap has a strong airtightness against air and moisture, and liquid will not cause mildew if store for a long time.
- Separate components**
The product is composed of multiple separate parts, which are quick and easy to disassemble. The parts can be replaced at any time if damaged.
- The product has three modes, soap liquid, foam and spray.**
It needs to replace the corresponding pump head if place different liquids. (such as, if the soap liquid is replaced with foam, the soap liquid pump head must be replaced with a foam pump head.)
- Base Design**
The product has a base design, which can be placed on the desktop directly or installed on the wall.

◆ Specifications

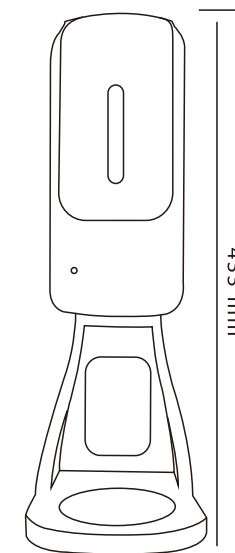
Dimensions	L120XW113XH265mm
	L120XW113XH433mm(With Base)
Capacity	1000ml
Output Volume	1.2ml(Liquid) 0.6ml(Foam) 0.7ml(Spray)
Package Size	15PCS 60*41*29.5cm
Package Size	12PCS 55*52*31.5cm(With Base)
Material	ABS
Battery	Four No. 5 Alkaline Batteries or Alternating Current

⑤

Automatic Soap Dispenser Instructions

A Healthy Life Starts with Hand-Cleaning

AUTO SOAP DISPENSER



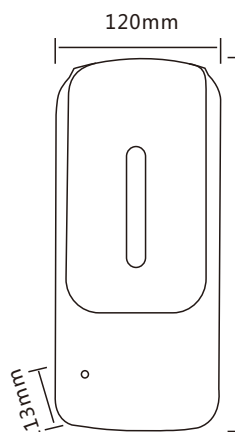
AUTO SOAP DISPENSER

Can be equipped with portable base

Zero-touch, anti-infection, more hygienic and safer

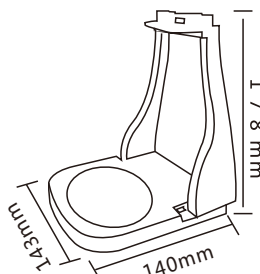
Capacity: 1000ml
Dual Power Supply: DC adapter or battery
Output Mode: Liquid, foam and spray
Output Volume:
0.9-1.2ml(Liquid)
0.6-1.1ml(Foam)
0.7-1.2ml(Spray)

433 mm



120mm

265 mm



178 mm

143 mm

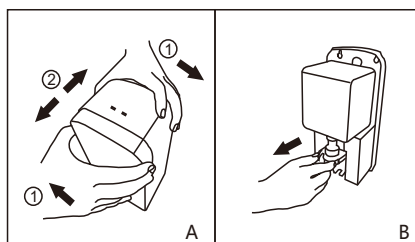
140 mm

①

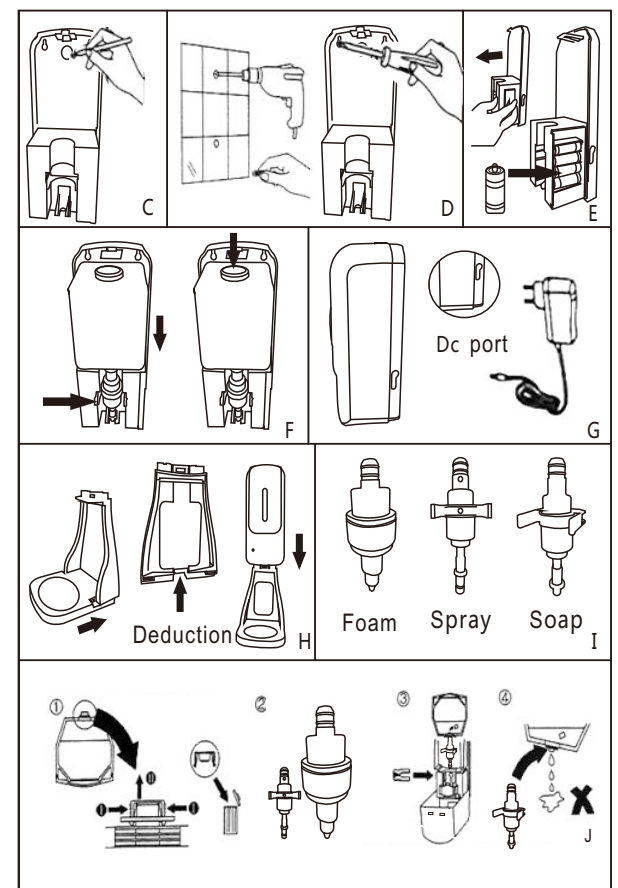
◆ Instructions

- This product is suitable for indoor use. Please keep the space for 40cm up under the soap dispenser when installing the soap dispenser.
- Please choose an appropriate location to install the soap dispenser. Do Not expose the machine to moisture or water.
- Please Do Not install the soap dispenser on the mirror or the surface with strong reflection, and Do Not install the soap dispenser underwater.
- Please Do Not use the soap dispenser under the strong light, as it will damage the infrared sensor.
- Please Do Not use the high concentration chemical liquid.
- Please use the liquid with moderate concentration. If the concentration is too high, it will cause the output slowly or no liquid discharge.
- The machine uses four 1.5V batteries (alkaline batteries are recommended). The product has an indication for low battery. When the LED light keeps flashing, meaning that it is in state of low battery. Please replace the battery timely.
- Please DO NOT place any obstacle under the output of sensor.
- This machine is an automatic sensor, users just need to put their hands within 10cm from the liquid outlet.
- If the machine does not work.
 - Put your hand near the detector.
 - Check the battery again.
 - Check the switch if is on.
 - Check the surface of the machine, if there is a lot of light and reflection on the lower surface, please remove the machine or install it to a higher place.
- If there is no soap dripping out.
 - Due to the soap liquid has not flowed into the pump head yet at the first time use, please try it several times until the liquid is discharged.
 - When the temperature is low in winter, the liquid may condense. Please pour some warm water (about 60°C) and wait a few minutes, then run the machine several times.
 - The soap liquid is not enough for.

◆ Installation and Operation Figures



②



◆ Installation Steps

- As shown in Figure A, Hold and push the panel with both hands in the opposite direction, and then you can open the cover.
- As shown in Figure B, pull out the fixing plate of the pump head in the direction of the arrow, and remove the pump head in the direction of the arrow.
- As shown in Figure C, use the bottom plate as a template, and then make a mark on the wall to determine the location of the mounting holes.
- As shown in Figure D, use the drill to make a hole at the mark and insert the rubber plug, and then fasten the bottom plate to the installation position with screws.

③