

Zed Land ESD

Anti-fatigue and ESD matting with built-in 'bounce' for extra comfort underfoot – even in static sensitive environments.



Up to four times more effective than standard foam matting, Zed Land ESD is made from high molecular density foam that bounces back for extra comfort and cushioning.

Zed Land ESD has been proven to significantly reduce standing fatigue, which helps to aid concentration and boost productivity. Made from anti-static materials and ESD certified, it's the ideal matting for anywhere that has ESD sensitive equipment. It also reduces the impact of noise, and provides protection against anything that might be accidentally dropped.



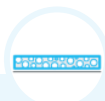
Features:



Made from minimal-wear foam that won't deaden



Embossed pebble surface



Patented foam construction



Electrostatic dissipative (ESD) properties



Comes in 18m (60') rolls and standard modules



Benefits:



Certified wear resistant (ASTM 4060: $\leq 1.5\%$)



Good slip resistance



Reduces standing fatigue and boosts productivity



Underfoot comfort in static sensitive environments



Quick to install



Standard sizes:

Product	Zed Land ESD
Height	9mm (3/8")
Standard roll option	18 x 0.91m (60' x 3')
Standard module option	0.6 x 0.91m (2' x 3')
	0.91 x 1.5m (3' x 5')
	0.91 x 3m (3' x 10')
Weight	3.3kg/m ² (0.74 lbs/sq.ft)

Surface modules are supplied with factory fitted PVC ramped edging to four sides

Tolerances:

	Height (+/- 0.5mm)	Length (0+0.3m)	Widths (+/- 1cm)
Zed Land ESD	9 mm	18 m	91 cm

All dimensions are nominal

Technical information:

Acoustic	Excellent sound absorption
Anti-fatigue I	ASTM D2362 = 33
Composition	Vinyl foam/vinyl wear layer.
Electrostatic discharge (ESD)	ASTM D257: 10 ⁹
Thermal	Designed to function at temperatures from -23°C and up to +60°C. Slight size variation may occur at temperature extremes.
Wear rating	ASTM 4060: ≤1.5%
Warranty	Total confidence warranty.

Installation:

Zed Land ESD's interlocking system means installation is simple:

- Comes in rolls or modules for quick installation
- Easy to cut to size and shape
- No special tools needed

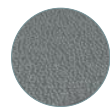
Cleaning:

Keeping Zed Land ESD looking good is easy:

- Easy to handle
- Simply lift or roll to clean with a high pressure hose



Colours:



Dark grey



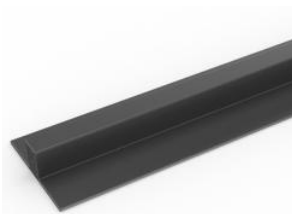
Blue

More colours
available
upon request

Ancillaries:

> Zed Land ESD

PVC snap track (H: 10.5mm)



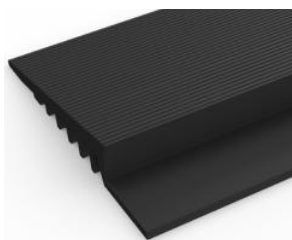
Two-part snap track that can be welded together to join rolls end-to-end or side-to-side to cover large areas. Supplied with cold welding paste. Comes in dark grey. Size: 10.5mm x 2.5m (13/32" x 8'2")

ESD screw fit earthing lead



Supplied in 4.5m (14'9") lengths

PVC edging (H: 10mm, W: 50mm)



Supplied in rolls of 10.1m (33') length with cold welding paste. Comes in black and dark grey. Size: 10mm x 50mm x 10.1m (3/8" x 2" x 33')