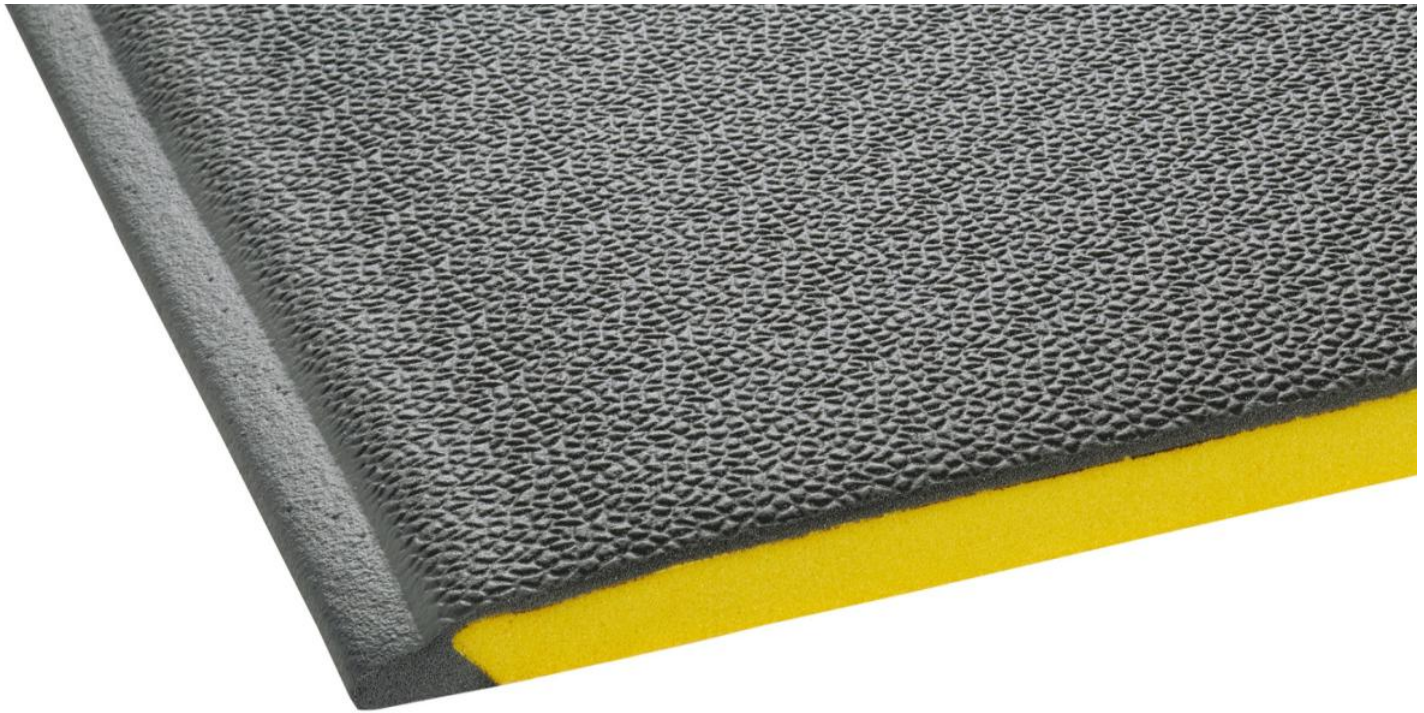


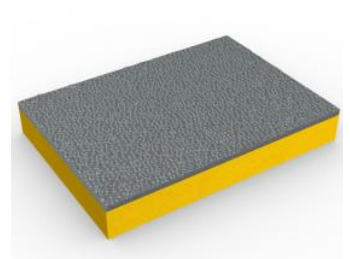
Tuff Spun Wear

High-performance, anti-fatigue matting perfect for commercial and retail workplaces.



With its thick foam composition and heavy-duty top layer, Tuff Spun Wear is the ideal anti-fatigue matting for commercial and retail workplaces.

50% thicker than Tuff Spun, this ultra-cushioned matting provides extra comfort for standing employees, helping to reduce fatigue and boosting productivity.



Features:



Heavy-duty top layer



Embossed pebble surface



Increased foam thickness



Closed cell construction



Comes in 18m (60') rolls and standard modules



Benefits:



Certified wear resistant (ASTM 4060: <0.3g loss)



Good slip resistance



Extra cushioning to improve comfort



Protects dropped items from damage



Quick to install



Tuff Spun Wear

Data sheet



Standard sizes:

Product	Tuff Spun Wear
Height	14mm (9/16")
Standard roll option	18 x 0.91m (60' x 3')
Standard module options	0.6 x 0.91m (2' x 3')
	0.91 x 1.5m (3' x 5')
	0.91 x 3m (3' x 10')
Weight	4kg/m ² (0.74 lbs/sq.ft.)

Surface modules are supplied with factory fitted PVC ramped edging to four sides

Tolerances:

	Height (+/- 0.5mm)	Lengths (0+0.3m)	Widths (+/- 1cm)
Tuff Spun Wear	14 mm	18 m	91 cm

All dimensions are nominal

Technical information:

Acoustic	Excellent sound absorption
Composition	Vinyl foam/vinyl wear layer.
Thermal	Designed to function at temperatures from -23°C and up to +60°C. Slight size variation may occur at temperature extremes.
Wear rating	ASTM 4060: <0.3g loss.
Warranty	One year.

Installation:

Tuff Spun Wear's one-piece construction means installation is simple:

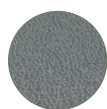
- Comes in rolls or modules for quick installation
- Easy to cut to size and shape
- No special tools needed

Cleaning:

Keeping Tuff Spun Wear looking good is easy:

- Light to handle
- Simply lift or roll to clean
- Easy to clean and maintain

Colours:



Dark grey

More colours
available
upon request

Ancillaries:

> Tuff Spun Wear

PVC edging (H: 10mm, W: 60mm)



Supplied in rolls of 10.1m (33') length with cold welding paste. Comes in black and dark grey. Size: 10mm x 60mm x 10.1m (9/16" x 2 1/2" x 33')

PVC snap track (H: 10mm)



Two-part snap track that can be welded together to join rolls end-to-end or side-to-side to cover large areas. Supplied with cold welding paste. Comes in dark grey. Size: 10.5mm x 2.5m (13/32" x 8'2")