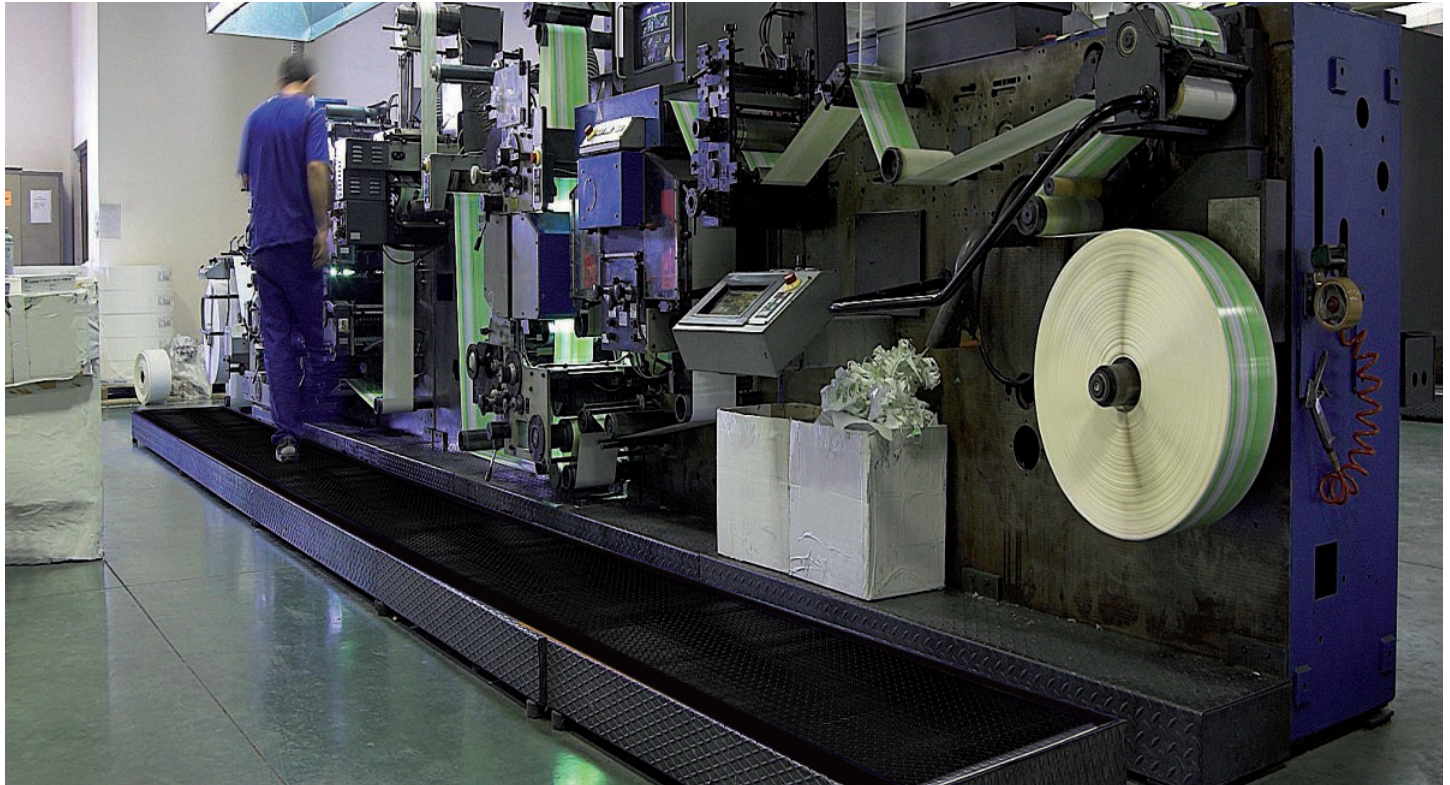


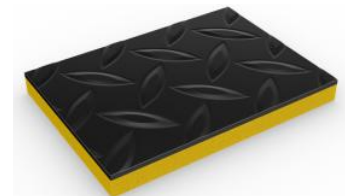
# Tuff Spun Deck

Heavy-duty, anti-fatigue foam matting for extra traction in industrial and commercial workplaces.



Our popular Tuff Spun matting also comes in a heavy-duty version with extra cushioning and added traction – ideal for commercial and industrial workplaces where employees need both comfort and slip resistance.

The 14mm thick foam layer delivers extra cushioning, while the embossed checker plate provides added traction, abrasion and puncture resistance. Certified wear resistant, this anti-fatigue matting reduces standing fatigue and boosts productivity.



## Features:



Heavy-duty,  
deck-top surface



Embossed surface



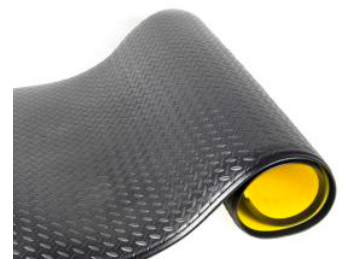
Checker-plate design



14mm (9/16")  
thickness



Comes in 18m (60')  
rolls and standard  
modules



## Benefits:



Certified wear  
resistant (ASM 4060:  
<0.2g loss)



Good slip  
resistance



Added abrasion and  
puncture resistance



Extra cushioning to  
improve comfort



Quick to install



# Tuff Spun Deck

## Data sheet



### Standard sizes:

Product	Tuff Spun Deck
Height	14mm (9/16")
Standard roll option	18 x 0.91m (60' x 3')
Standard module options	0.6 x 0.91m (2' x 3')
	0.91 x 1.5m (3' x 5')
	0.91 x 3m (3' x 10')
Weight	4 kg/m <sup>2</sup> (0.74 lbs/sq.ft.)

Surface modules are supplied with factory fitted PVC ramped edging to four sides

### Tolerances:

	Height (+/- 0.5mm)	Lengths (0+0.3m)	Widths (+/- 1cm)
Tuff Spun Deck	14 mm	18 m	91 cm

All dimensions are nominal

### Technical information:

Acoustic	Excellent sound absorption
Composition	Vinyl foam/vinyl wear layer.
Thermal	Designed to function at temperatures from -23°C and up to +60°C. Slight size variation may occur at temperature extremes.
Wear rating	ASTM 4060: <0.3g loss.
Warranty	One year.

### Installation:

Tuff Spun Deck's one-piece construction means installation is simple:

- Comes in rolls or modules for quick installation
- Easy to cut to size and shape
- No special tools needed

### Cleaning:

Keeping Tuff Spun Deck looking good is easy:

- Light to handle
- Simply lift or roll to clean
- Easy to clean with a high pressure hose

### Colours:



Black

More colours  
available  
upon request

**Ancillaries:**

**> Tuff Spun Wear**

PVC edging (H: 10mm, W: 60mm)



Supplied in rolls of 10.1m (33') length with cold welding paste. Comes in black and dark grey. Size: 10mm x 60mm x 10.1m (9/16" x 2 1/2" x 33')

PVC snap track (H: 10mm)



Two-part snap track that can be welded together to join rolls end-to-end or side-to-side to cover large areas. Supplied with cold welding paste. Comes in dark grey. Size: 10.5mm x 2.5m (13/32" x 8'2")